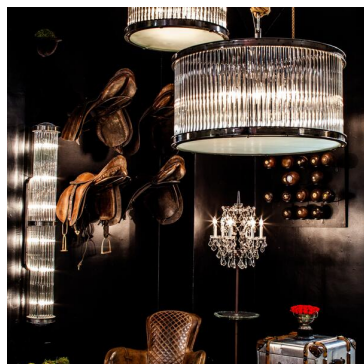




TIMOTHY OULTON



ROD PENDANT

Ceiling Lights

The Rod pendant is a modern day interpretation of Venetian Murano brass and glass library lights from the 1940s. Softly illuminated from within, this unique design creates a mellow ambience, perfect for relaxing or entertaining guests. The glass rod structure is inspired by the colonnades of Stowe School, which made a huge impression on Tim during a visit for an away game in his school days. The dazzling opulence of the glass is daringly contrasted with our natural raw iron finish, bearing the marks of the welder's torch for a modern, industrial take on elegance.

SPECIFICATION

Product Code:	T-ROD-LC-0002-A
Product Height:	57cm / 22"
Product Width:	80cm / 31"
Product Depth:	80cm / 31"
Weight:	46kg / 100lbs
Max Wattage:	200W
No. of Bulbs:	8
Bulb Included:	Yes
Dimmable:	Yes
Ajustable	Yes
Chain/Rod:	