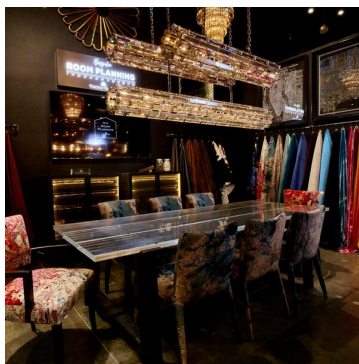
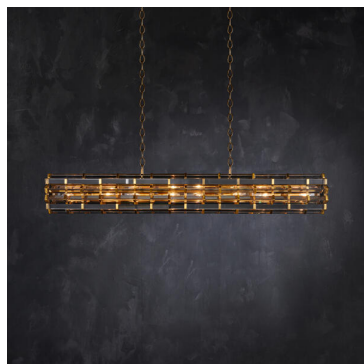
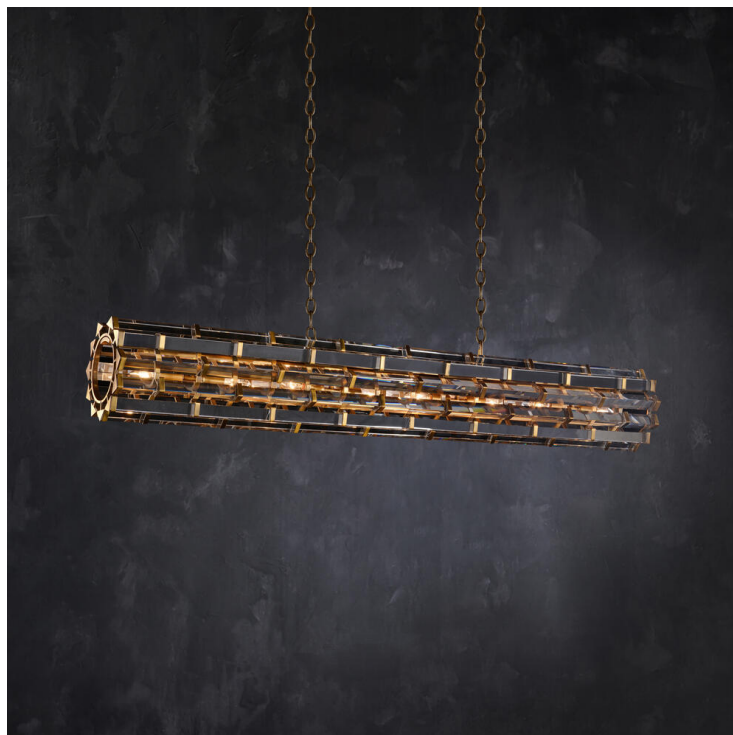




TIMOTHY OULTON



NIGHT ROD RECT PENDANT BRONZE

Ceiling Lights

The glamorous Night Rod pendant is inspired by unexpected flashes of light in the night. Long prisms of optical grade glass are held tightly together in a staggered effect, within a skeleton of either plated bronze or natural metal. The triangular shape of the prisms reflects and refracts the light on all sides in a shimmering dance of sparkle.

SPECIFICATION

| | |
|----------------------|-----------------|
| Product Code: | T-NIG-LP-0013-A |
| Product Height: | 23cm / 9" |
| Product Width: | 153cm / 60" |
| Product Depth: | 23cm / 9" |
| Weight: | 35kg / 76lbs |
| Max Wattage: | 200W |
| No. of Bulbs: | 8 |
| Bulb Included: | Yes |
| Dimmable: | Yes |
| Ajustable Chain/Rod: | Yes |