

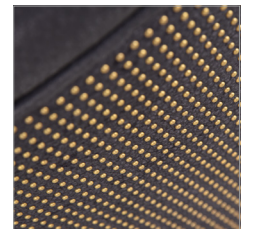
< Back



PRODUCTS / CLASSIC COLLECTION / DINING CHAIRS

MIMI STUD

With its edgiest look to date, the classic Mimi dining chair goes punk in studded leather. The seat and front is clad in Safari Black, a truly rugged leather with a natural, lived-in patina and a dry texture, almost like suede, complemented by black chair legs. Brass-studded Safari leather covers the back of the chair, with piped detailing around the edge for a more tailored feel. With a flared back and generously padded seat for comfort, Mimi Stud merges classic styling with an audaciously modern take on glamour. Available with or without arms.



DIMENSIONS:

OVERALL	SEAT
L: 20.1" / 51 cm	L: 20.1" / 51 cm
W: 24.4" / 62 cm	W: 17.3" / 44 cm
H: 35" / 89 cm	H: 20.5" / 52 cm

PRODUCT SHOWN IN:

Pixel Black

> SEATINGS SPECIFICATIONS

AVAILABLE IN:

LEATHER: Pixel Black