

PRODUCTS / CLASSIC COLLECTION / ARMCHAIRS

SADDLE CHAIR

Saddle up for the ride. Inspired by the heritage of equestrian pursuit, the Saddle chair evokes the spirit of freedom and the harnessing of power that a saddle represents. The Saddle's unique shape evokes adventure, speed and sporting elegance of polo, racing and hunting. Complete with actual stirrups on each side, the Saddle chair is designed with a fiberglass frame to create the sleek dynamic shape, and upholstered in a range of leathers with cowhide accent options on the front and back.

Shown in Buck'dN Brok'n leather, characterised by its distinctive, aged appearance. Craftsmen blend this cracked and damaged look with the leather's natural softness to create a totally unique, luxurious experience. Each piece developed in Buck'dN Brok'n finish may look slightly different from another. The unique markings and grain patterns on the leather, as well as distressed scratches and abrasions, will vary from piece to piece.



OTHER MODELS :



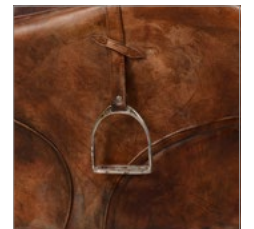
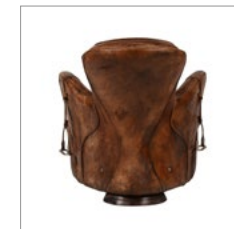
Saddle Footstool

L: 21.3" / 54 cm
W: 26" / 66 cm
H: 16.1" / 41 cm

AVAILABLE IN :

LEATHER : Antique Tobacco, Whisky | Buff Burnished Blue, Nutmeg, Chocolate, Graphite, Pewter, Taupe | Destroyed Black, Raw | Old Saddle Black, Cocoa, Nut | Safari Black, Charcoal, Nutmeg, Tobacco | Savage | Vagabond Black, Blue, Brown, Mustard, Red | Vintage Bianco, Cigar, Jet Black | Bull & Bull Nubuck | Buck'dN Brok'n

COMBOS : Moo Black & White with : Bull | Destroyed Black | Old Saddle Black | Moo Brown & White with : Bull | Old Saddle Nut | Vagabond Black & Vagabond Red | Vagabond Black & Vagabond Brown | Destroyed Raw & Destroyed Black



DIMENSIONS :

OVERALL	SEAT	ARM
L: 29.1" / 74 cm	L: 20.9" / 53 cm	-
W: 41.7" / 106 cm	W: 23.2" / 59 cm	-
H: 30.7" / 78 cm	H: 16.1" / 41 cm	H: 22" / 56 cm

PRODUCT SHOWN IN :

Buck'dN Brok'n

> SEATINGS SPECIFICATIONS