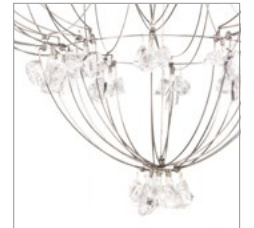


HOME ACCESSORIES / CLASSIC COLLECTION / LIGHTING

CLASSIC VOLT

Inventor Thomas A. Edison said: “All you need to invent is a good imagination and a pile of junk.” The Classic Volt chandelier elegantly brings this idea to life, transforming recycled optical glass fragments and wire to form a highly creative lighting centrepiece. Playing with the DNA of a classic chandelier, the shape is outlined by a simple wire frame which is also used to transfer power to the bulbs without any need for additional wiring. This allows the chandelier to retain its drama and size whilst simultaneously being incredibly lightweight, and requiring a very low power rating. Clusters of optical glass shards are used in place of traditional candleholders, the clusters are broken and then hand-polished to a smooth finish, with the bulbs placed directly above each cluster to diffuse the light for a soft, romantic effect. A fun and avant-garde play on tradition.



DIMENSIONS :

L: 46.1" / 117 cm Weight: 21 kg
W: 46.1" / 117 cm Max. Watt.: 10 W
H: 47.4" / 121 cm No. of Bulbs: 50

PRODUCT SHOWN IN :

Optical Grade Glass Scrap Crystals

Check for release certification in specific regions.

> APPENDIX SPARE PARTS

BULB TYPE :

EU, AU, ASIA, US: E10 0.3W / LED

This light fixture is not dimmable.