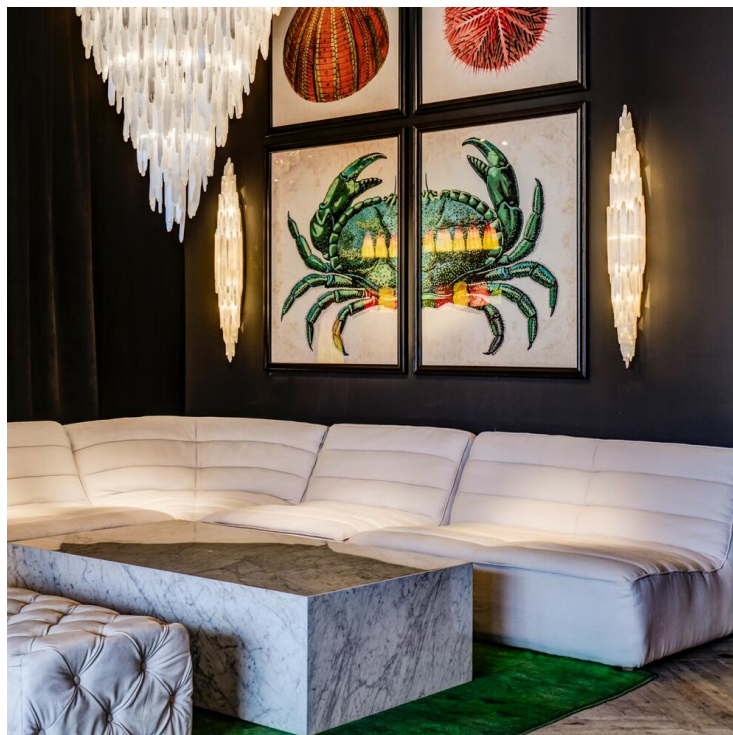




TIMOTHY OULTON



SELENITE SCONCE

Wall Lights & Sconces

Named after the Greek goddess of the moon, selenite is known for its soft pearlescent glow similar to moonlight. It is the crystalline version of the mineral Gypsum, and is revered by many for its spiritual and protective properties with some believing it unlocks the chakra of divine wisdom. The oldest Selenite crystal ever discovered was 500,000 years old in Chihuahua, Mexico.

Suspended like glistening stalactites, the crystals in our Selenite sconce are painstakingly affixed to the frame one by one.

SPECIFICATION

Product Code:	T-SEL-LS-0001-U
Product Height:	120cm / 47"
Product Width:	16cm / 6"
Product Depth:	17cm / 7"
Weight:	16kg / 36lbs
Max Wattage:	10W
No. of Bulbs:	5
Bulb Included:	Yes
Dimmable:	Yes