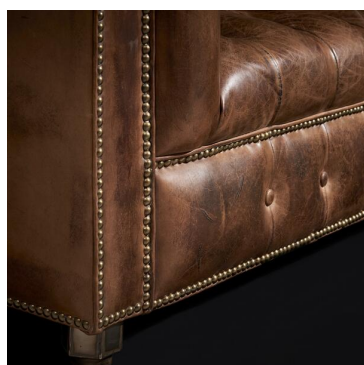
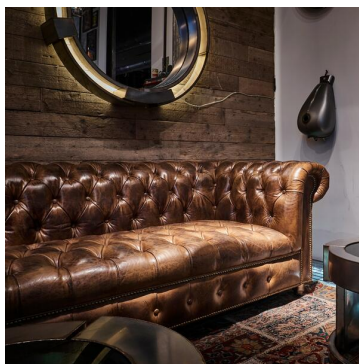
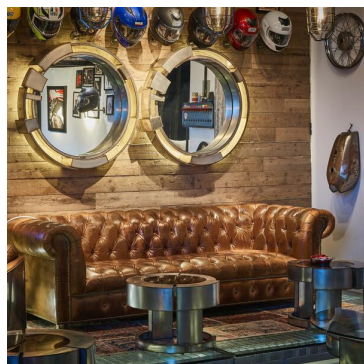




# TIMOTHY OULTON



## ROCKER SOFA

### Chesterfield Sofas

The ideology of the Rocker sofa comes from two very distinct and opposite worlds crashing together to form a perfect balance. Beginning with the Rockers, which was a sub culture that originated in the UK, based around rock 'n' roll music and cafe racer motorcycles. The Rockers' motorcycling lifestyle dropped them out of mainstream society and they were branded as rebels and outsiders. At the opposite end of British society, the Chesterfield sofa was designed for upper-class gentlemen to sit without creasing their suit. These worlds come together in the Rocker sofa, contrasting the refined Chesterfield silhouette with distressed leather, emulating the scruffy and rebellious Rockers, and finished with stainless steel feet shaped like giant bolts, referencing the machine world of motorcycling.

### SPECIFICATION

Product Code:	M-ROV-SS-0001-S
Product Height:	73.5cm / 29"
Product Width:	242cm / 95"
Product Depth:	97cm / 38"
Seat Height:	41cm / 16.1"
Seat Width:	170cm / 66.9"
Seat Depth:	61cm / 24"
Weight:	80kg / 176lbs
Seat Suspension:	S shaped steel springs & elastic webbing

Back	Elastic webbing
Suspension:	
Arm	Elastic webbing
Suspension:	
Seat Cushion	Foam & fibre
Filling:	
Frame	Kiln dried hardwood &
Construction:	plywood
Bulb	No
Included:	