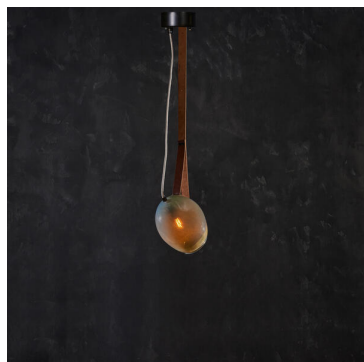
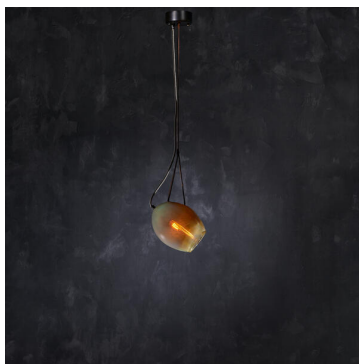




TIMOTHY OULTON



NAZE PENDANT

Ceiling Lights

A juxtaposition of smooth blown glass and vegetable tanned leather. The glass shade has a translucent finish, diffusing the light for a soft and atmospheric glow, with each handmade shade displaying its own unique effect and characteristics. Suspended by a looped leather strap which can be simply pulled to adjust the direction of the pendant upwards or downwards. A simple and minimal design, elevated by a sophisticated dark bronze ceiling rose.

SPECIFICATION

Product Code:	N-NAZ-LP-0001-U
Product Height:	25cm / 10"
Product Width:	20cm / 8"
Product Depth:	20cm / 8"
Weight:	5kg / 11lbs
Max Wattage:	3.5W
No. of Bulbs:	1
Bulb Included:	Yes
Dimmable:	Yes
Ajustable Chain/Rod:	Yes

