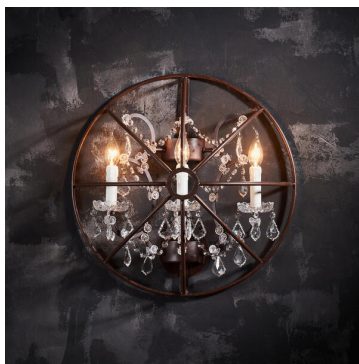
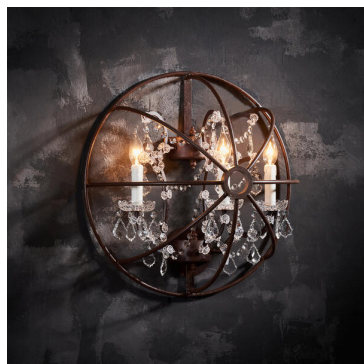
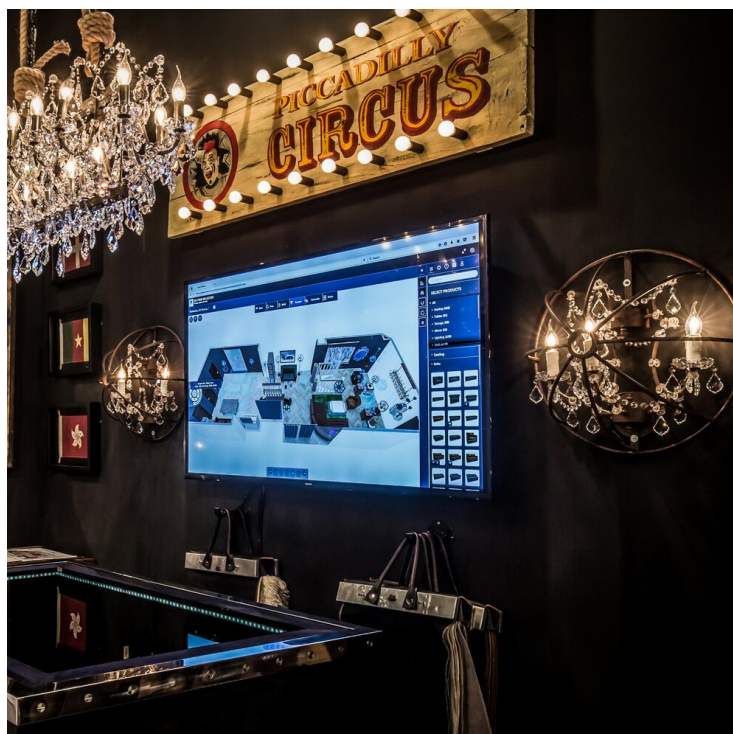




# TIMOTHY OULTON



## GYRO CRYSTAL SCONCE

### Wall Lights & Sconces

The Gyro Crystal sconce is inspired by nineteenth century experimental physicist Leon Foucault's gyroscope. A framework of aged metal spheres is fixed around a traditional Georgian style chandelier, colliding industrial accents with romance and glamour.

### SPECIFICATION

---

Product Code:	T-GYO-LS-0001-U
Product Height:	53cm / 21"
Product Width:	53cm / 21"
Product Depth:	26.5cm / 10"
Weight:	4kg / 8lbs
Max Wattage:	18W
No. of Bulbs:	3
Bulb Included:	Yes
Dimmable:	Yes