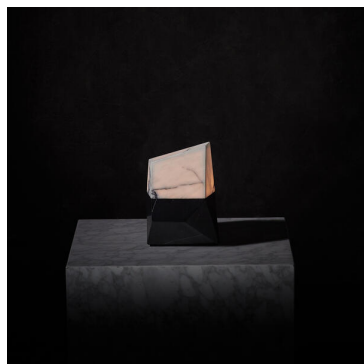




TIMOTHY OULTON



META TABLE LAMP

Table & Desk Lamps

In a meeting of light and dark, the Meta table lamp is handcrafted from two pieces of solid marble, seamlessly integrated as though one singular form. The purity and lightness of white moonstone meets the dark drama of the black marble, both honed for a matt finish, while an internal LED enables the marble to retain its cool touch. A small yet striking accent lamp, perfect for bookcases or display shelves. Moonstone is a natural material, a slight crazing on imperfection can be observed.

SPECIFICATION

Product Code:	T-MEF-LT-0001-U
Product Height:	25.5cm / 10"
Product Width:	26.5cm / 10"
Product Depth:	16cm / 6"
Weight:	5kg / 12lbs
Max Wattage:	4W
No. of Bulbs:	1
Bulb Included:	No
Dimmable:	No

